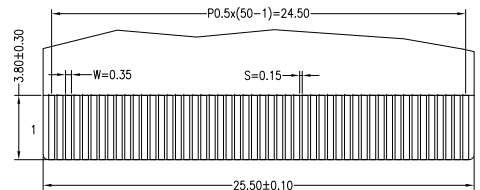
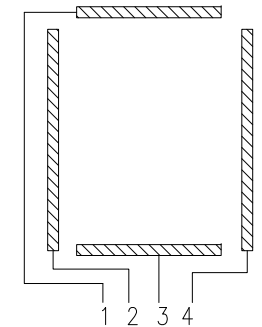
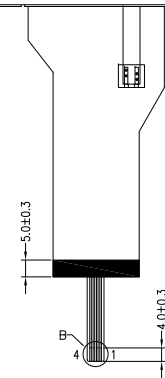
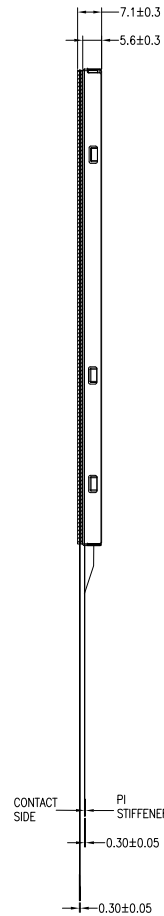
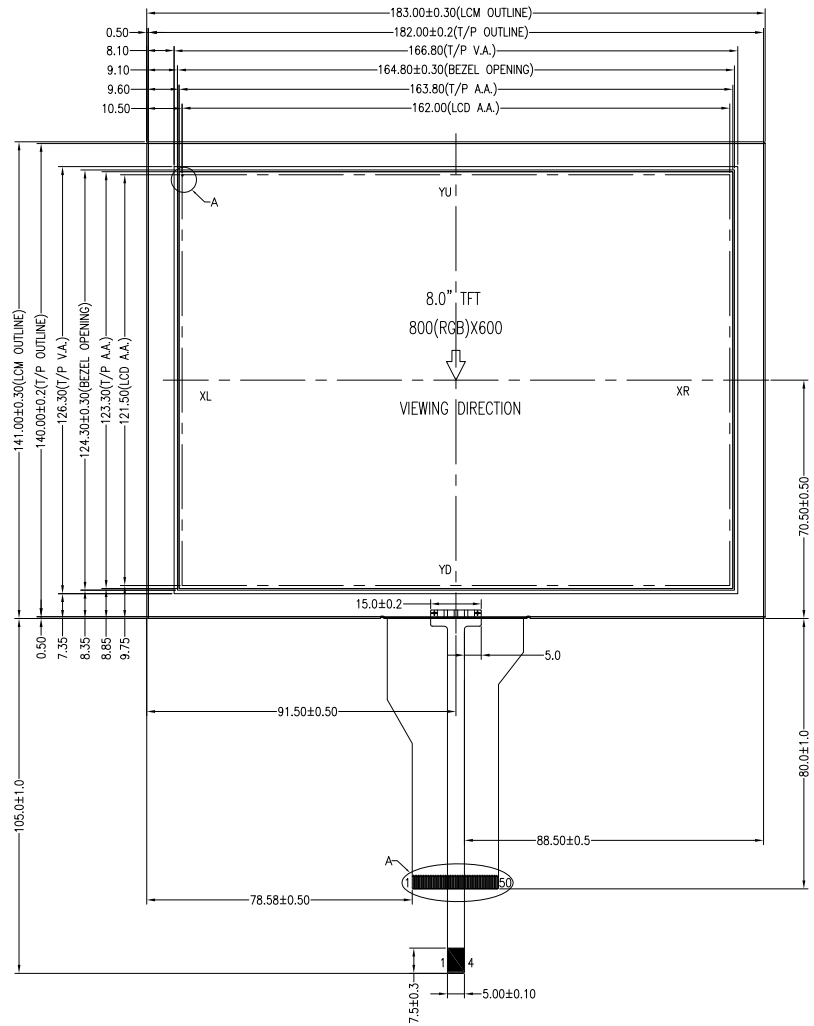
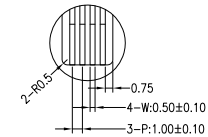


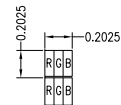
NO MECHANICAL HOUSING TO HOLD THE TFT AND THE TOUCH PANEL ON THIS PRODUCT, SO THE END UNIT'S MECHANICAL DESIGN MUST INCLUDE A HOUSING FOR PREVENTING THE SEPARATION OF THE TFT AND THE TOUCH PANEL.



DETAIL B
(SCALE 5:1)



DETAIL C
(SCALE 3:1)



DETAIL A
(SCALE 40:1)

NOTES:

1. DISPLAY TYPE: TFT, TRANSMISSIVE, NORMALLY WHITE
2. OPERATING VOLTAGE: VCC=3.3V (TYP.)
3. VIEWING DIRECTION: 12:00 O'CLOCK
4. DRIVER IC: EK79713BCGB + EK73215BCGA
5. OPERATING TEMP.: -20°C ~ 70°C
6. STORAGE TEMP.: -30°C ~ 80°C
7. LED BACKLIGHT: WHITE LED, IF=180mA, VF=8.4V~10.5V
8. SURFACE LUMINANCE: 225CD/M² (TYP.)
9. TOP POLARIZER SURFACE TREATMENT: ANTI-GLARE
10. RECOMMEND MATCHING CONNECTOR: HIROSE FH12A-50S-0.5H OR EQUIVALENT
11. ONLY THE SINGLE LAYER AREA ON FPC IS BENDABLE AND THE MINIMUM BEND RADIUS IS 1.5MM
12. GENERAL TOLERANCE: ±0.3MM
13. ROHS COMPLIANT

PIN ASSIGNMENT FOR LCM			
NO.	SYMBOL	NO.	SYMBOL
1	LED+	31	R4
2	LED+	32	R3
3	LED-	33	R2
4	LED-	34	R1
5	GND	35	RO
6	Vcom	36	GND
7	Vcc	37	DCLK
8	MODE	38	GND
9	DE	39	L/R
10	VS	40	U/D
11	HS	41	VGH
12	B7	42	VGL
13	B6	43	AVDD
14	B5	44	RESET
15	B4	45	NC
16	B3	46	VCOM
17	B2	47	DITHB
18	B1	48	GND
19	B0	49	NC
20	G7	50	NC
21	G6	51	
22	G5	52	
23	G4	53	
24	G3	54	
25	G2	55	
26	G1	56	
27	G0	57	
28	R7	58	
29	R6	59	
30	R5	60	

PIN ASSIGNMENT FOR RTP			
NO.	SYMBOL	NO.	SYMBOL
1	YU	3	YD
2	XL	4	XR

MULTI-INNO TECHNOLOGY CO., LTD.			
DRAWN BY:	RITA	2024.01.25	MODULE P/N:
CHECKED BY:		SCALE : 1/1	MI0800F1T-8RP
APPROVED BY:		UNIT: mm	DESCRIPTION:
VER.	01	SHEET NO.: 1/1	TFT +RTP MODULE

01	FIRST ISSUE	RITA	2024.01.25
VER.	REVISED DESCRIPTION	REVISER	DATE